

**PROJECT**

**A40 SMART CORRIDOR**

**PROJECT NUMBER**

60615257

**CLIENT**



County Hall, New Road  
 Oxford, OX1 1ND  
 Tel: 01865 792422  
 www.oxfordshire.gov.uk

**CONSULTANT**

AECOM I&E Ltd.  
 AECOM House, 63-77 Victoria Street  
 St Albans, Herts AL1 3ER  
 Tel: 01727 535000  
 www.aecom.com

**NOTES**

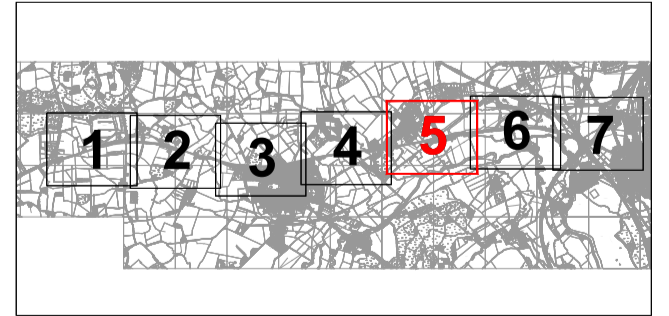
- DUALLING SCHEME EXTENTS
- INTEGRATED BUS LANES SCHEME EXTENTS
- DUKE'S CUT IMPROVEMENTS SCHEME EXTENTS
- PARK AND RIDE BOUNDARY AS PREVIOUS PLANNING APPROVAL REF. R3.0557/19
- RED LINE BOUNDARY
- LAND IN OWNERSHIP OF OCC
- LAND OWNED BY OCC THAT CROSSES RED LINE BOUNDARY
- PROPOSED COMPOUND AREA

FOR PLANNING

**ISSUE/REVISION**

ISSUE	DATE	DESCRIPTION
P01	05/11/21	FIRST ISSUE
P02	12/11/21	FOR APPROVAL
P03	17/11/21	ISSUED FOR PLANNING
P04	03/12/21	OCC/GH COMMENTS ADDRESSED
P05	15/12/21	VALIDATION COMMENTS
I/R	DATE	DESCRIPTION

**KEY PLAN**

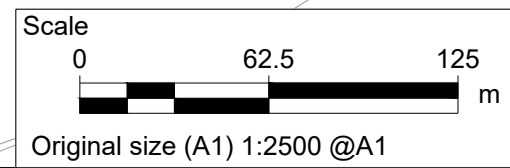


**SHEET TITLE**

**A40 PRELIMINARY DESIGN SITE PLAN SHEET 5 OF 7**

**SHEET NUMBER**

Project Number	1	Originator	1	Volume	-	Revision	P05
A40		- ACM		- 01			
ALL_ZZ_ZZ_ZZ -DR -C -0006							
Location	1 Type		1 Role		1 Number		



Reproduced from the Ordnance Survey mapping with the permission of the Controller of Her Majesty's Stationery Office © Crown Copyright. Unauthorised reproduction infringes Crown Copyright, and may lead to prosecution or civil proceedings. Oxfordshire County Council Licence No 100023343.

This drawing has been prepared for the use of AECOM's client. It may not be used, modified, reproduced or relied upon by third parties, except as agreed by AECOM or as required by law. AECOM accepts no responsibility, and denies any liability, whatsoever, to any party that uses or relies on this drawing without AECOM's express written consent. Do not scale this document. All measurements must be obtained from the stated dimensions.